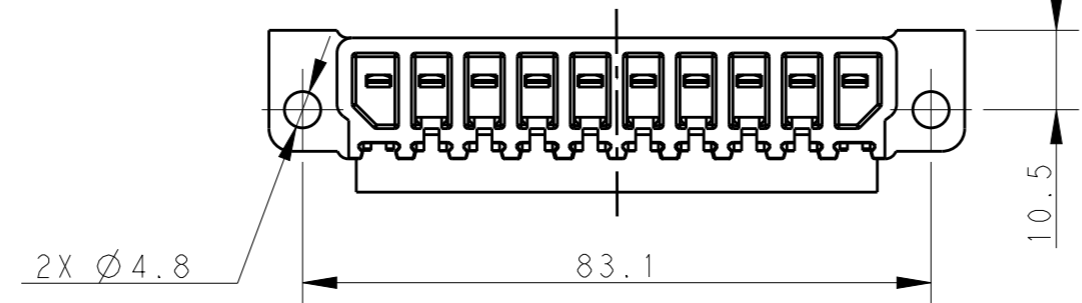
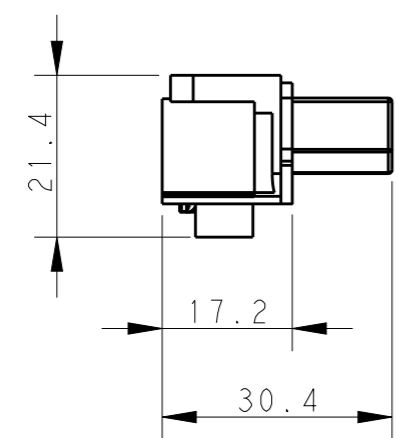
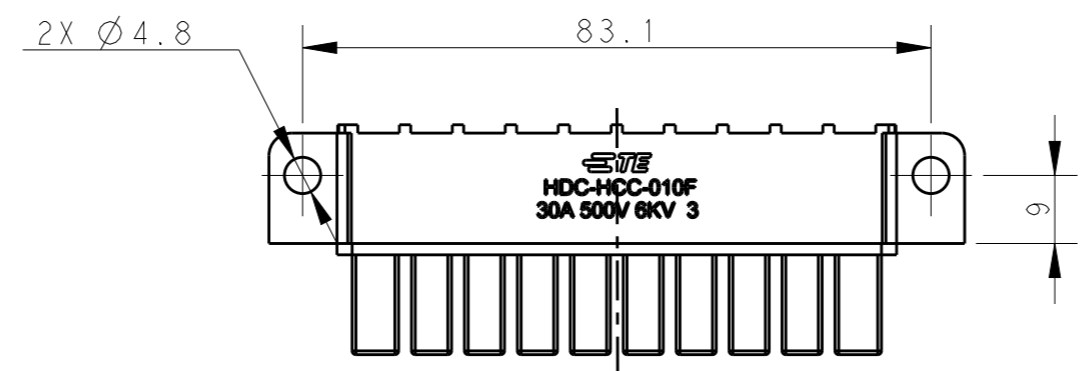
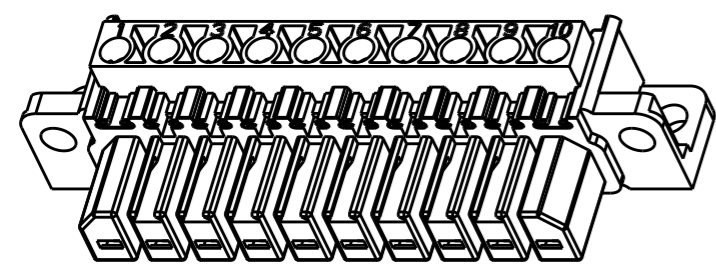


THIS DRAWING IS UNPUBLISHED. RELEASED FOR PUBLICATION 20
 © COPYRIGHT 20 BY - ALL RIGHTS RESERVED.

REVISIONS					
P	LTR	DESCRIPTION	DATE	DWN	APVD
	A	INITIAL	13JUL2016	YC	CW



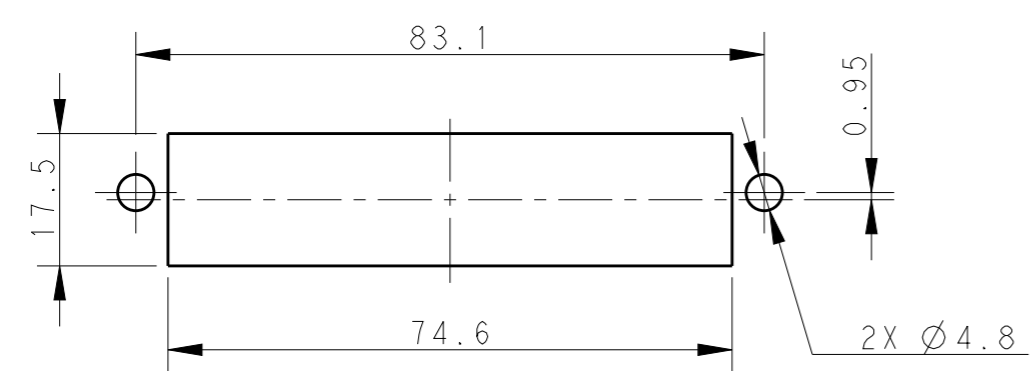
NOTES:

- TECHNICAL CHARACTERISTICS:
 INSULATION MATERIAL: PA
 RATED VOLTAGE: 500 V
 RATED CURRENT: 30 A
 INSULATION RESISTANCE: >=400MΩ
 RATED IMPULSE VOLTAGE: 6 KV
 POLLUTION DEGREE: 3
 FLAMMABILITY: UL94V-0
 MATING CYCLES: 500 CYCLES
 WIRE RANGE: 0.5-4 mm² (20-12 AWG)
 CONTACT TYPE: SCREW CRIMP (M3)

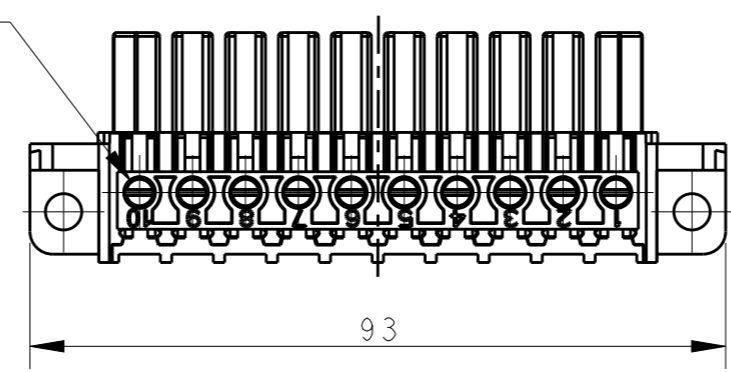
注释:

- 技术参数:
 绝缘材料: PA
 额定电压: 500 V
 额定电流: 30 A
 绝缘电阻: >=400MΩ
 额定脉冲电压: 6 KV
 污染等级: 3
 阻燃等级: UL94V-0
 插拔次数: 500次
 接线范围: 0.5-4 mm² (20-12 AWG)
 接线类型: 螺钉压接 (M3)

10X M3 SCREW
 RECOMMENDED TIGHTENING TORQUE 0.5Nm
 10X M3螺丝, 推荐拧紧力矩0.5Nm



PANEL CUT FOR INSERTS FOR USE WITHOUT HOODS/ HOUSINGS



THIS DRAWING IS A CONTROLLED DOCUMENT.

DIMENSIONS:	TOLERANCES UNLESS OTHERWISE SPECIFIED:
mm	0 PLC ±-
	1 PLC ±-
	2 PLC ±-
	3 PLC ±-
	4 PLC ±-
	ANGLES ±-
MATERIAL	FINISH
-	-
-	-

DWN	YORK CHEN	13JUL2016
CHK	KYLE ZENG	13JUL2016
APVD	CHRIS WANG	13JUL2016
PRODUCT SPEC	-	-
APPLICATION SPEC	-	-
WEIGHT	-	-
CUSTOMER DRAWING		

T2100102201-000	HCC-010-F HCC-010 母插, 单排
PART NUMBER 料号	PART DESCRIPTION 描述



NAME HCC-010-F			
SIZE	CAGE CODE	DRAWING NO	RESTRICTED TO
A3	00779	©-T2100102201000	-
SCALE 1:1		SHEET 1 OF 1	REV A