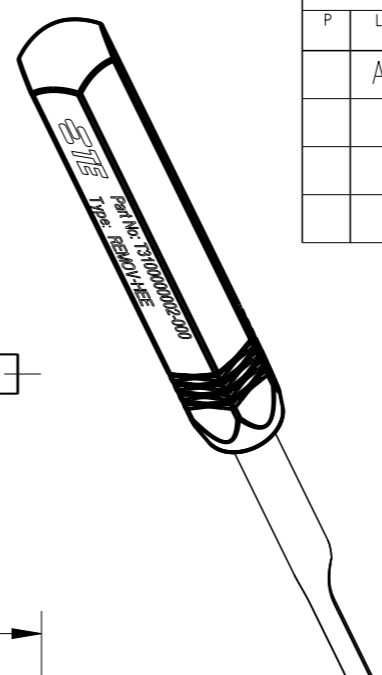
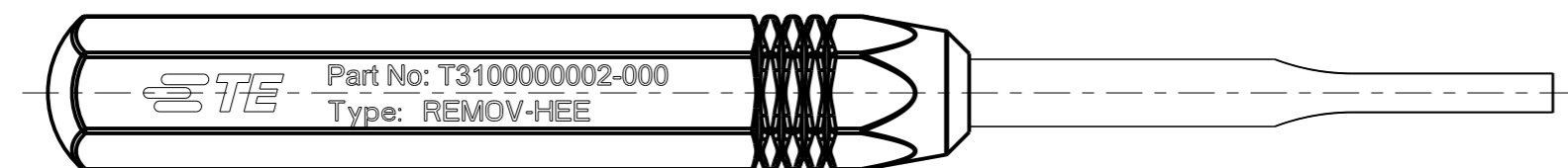


REVISIONS					
P	LTR	DESCRIPTION	DATE	DWN	APVD
	A	INITIAL RELEASE	19FEB2019	WQR	CW

TYPE 1: WITH TE LOGO
 类型 1: 带TE LOGO

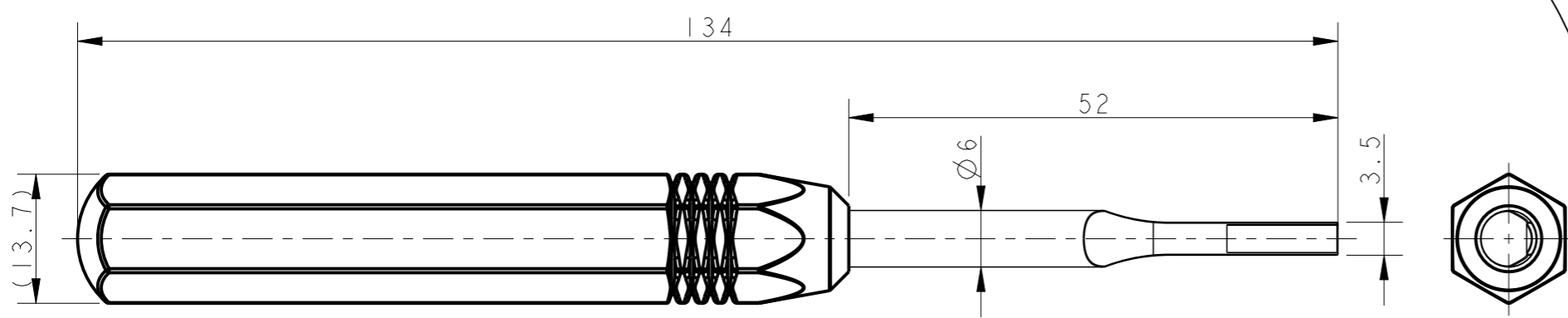


NOTES:

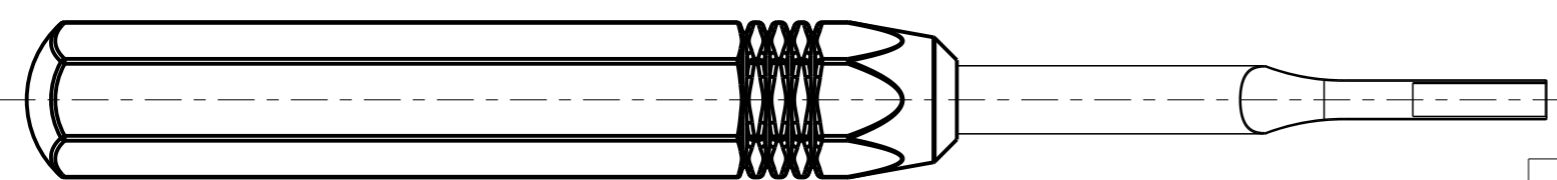
- TECHNICAL CHARACTERISTICS:
HANDLE MATERIAL: ALUMINIUM ALLOY
TIP MATERIAL: STEEL
- PRODUCT DESIGNED FOR 16A CONTACTS (CEM/CEF, DEM/DEF).
PRODUCT DESIGNED FOR HEE INSERT SERIAL.

注释:

- 技术参数:
手柄材料: 铝合金
尖端材料: 钢
- 产品适用于16A插针(CEM/CEF, DEM/DEF).
产品适用于HEE系列芯件.



TYPE 2: THIS TYPE IS SAME AS TYPE 1, ONLY NO LOGO
 类型 2: 此类型同类型 1, 只是无LOGO



T3100000002-001	REMOV-HEE, NO MARKING	HEE REMOVE TOOL, NO MARKING HEE 退针器, 未打字	TYPE 2 类型 2
T3100000002-000	REMOV-HEE	HEE REMOVE TOOL HEE 退针器	TYPE 1 类型 1
PART NUMBER 料号	PART DESCRIPTION 描述		TYPE 类型

THIS DRAWING IS A CONTROLLED DOCUMENT.		DWN 19FEB2019 WENQING RAO	 TE Connectivity NAME REMOV-HEE			
DIMENSIONS: mm		CHK 19FEB2019 GINO YAO			PRODUCT SPEC	
TOLERANCES UNLESS OTHERWISE SPECIFIED:		APVD 19FEB2019 CHRIS WANG			APPLICATION SPEC	
0 PLC ±- 1 PLC ±- 2 PLC ±- 3 PLC ±- 4 PLC ±- ANGLES ±- MATERIAL - FINISH -		WEIGHT -	SIZE A3	CAGE CODE -	DRAWING NO T310000000200X	RESTRICTED TO -
CUSTOMER DRAWING			SCALE 3:2	SHEET 1 OF 1	REV A	