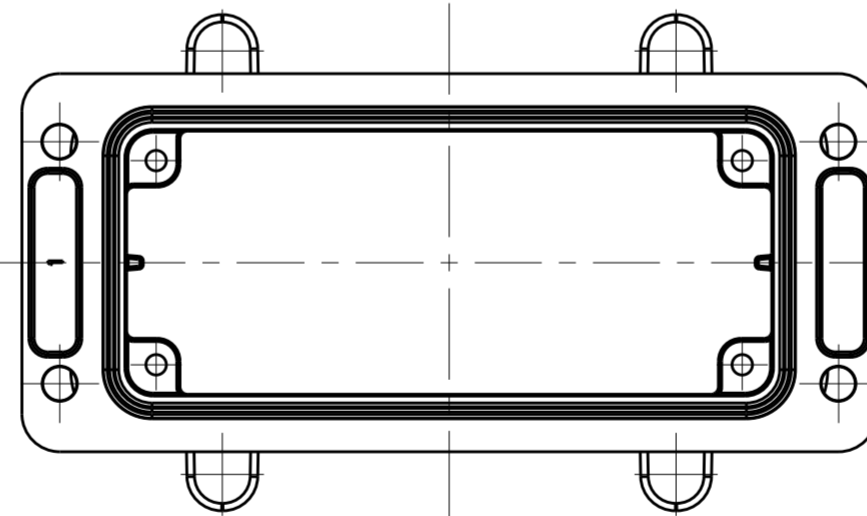
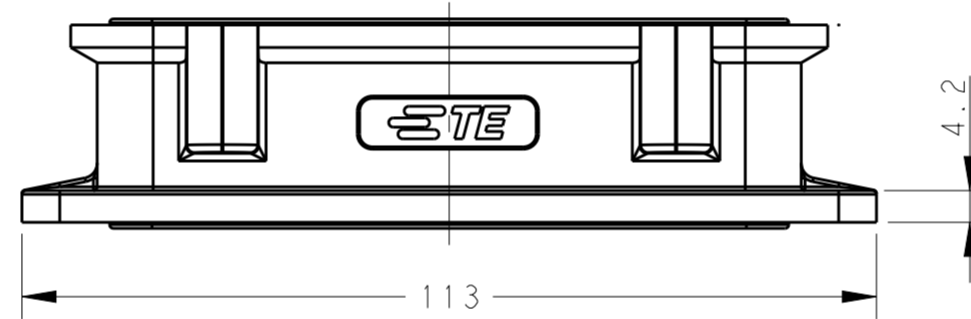
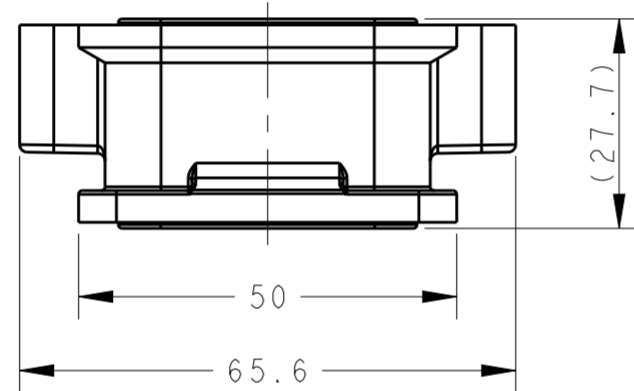
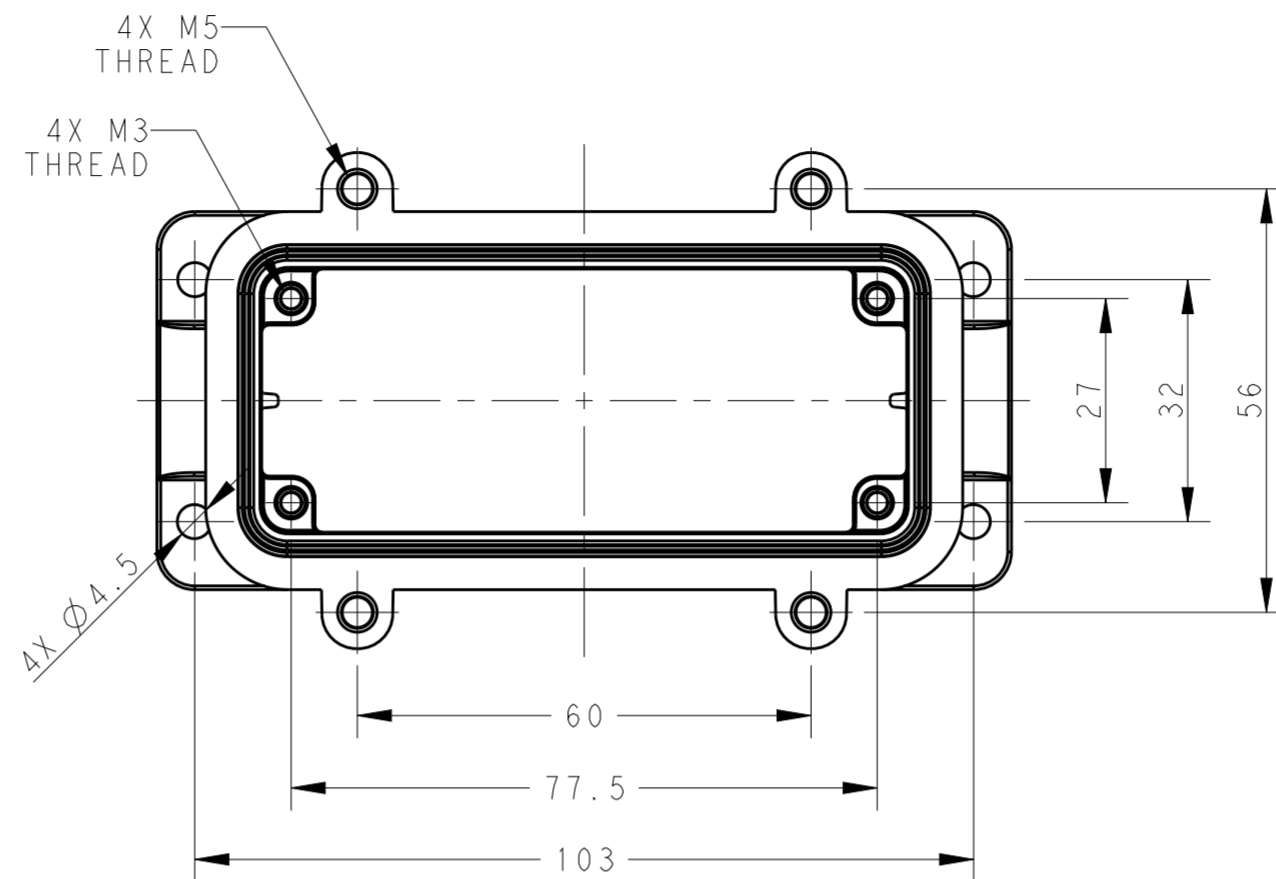
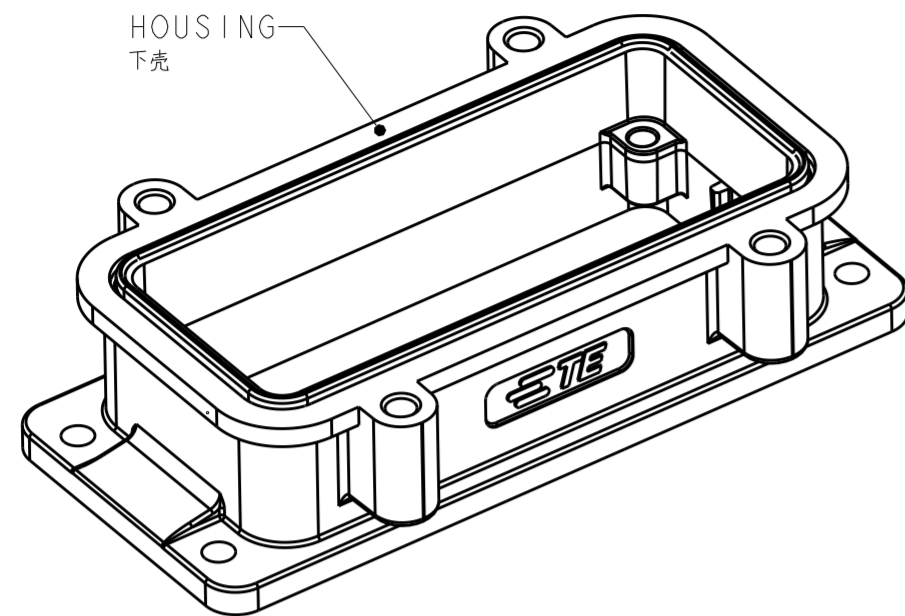


THIS DRAWING IS UNPUBLISHED. RELEASED FOR PUBLICATION 20
 © COPYRIGHT 20 BY - ALL RIGHTS RESERVED.

REVISIONS				
P	LTR	DESCRIPTION	DATE	APVD
A		INITIAL	19FEB2016	DW CW



NOTES:

- 1. TECHNICAL CHARACTERISTICS:
 HOUSING MATERIAL: DIE CAST ALUMINIUM ALLOY
 HOUSING SURFACE: POWDER COATED, GREY
 DEGREE OF PROTECTION: IP67 (MATED)

注释:

- 1. 技术参数:
 下壳材料: 铝合金
 下壳表面处理: 灰色粉末喷涂
 防护等级: IP67(配合)

T1690160000-000	H16B-AG-S	H16B HOUSING, SCREW TYPE, POWDER COATED, GREY H16B下壳, 螺丝连接, 灰色粉末喷涂
PART NUMBER 零件料号	PART DESCRIPTION 零件描述	

THIS DRAWING IS A CONTROLLED DOCUMENT.		DWN DAVID WANG 17FEB2017	TE Connectivity NAME H16B-AG-S
		CHK CHRIS WANG 17FEB2017	
		APVD XIANG XU 17FEB2017	
		PRODUCT SPEC 108-137015	
DIMENSIONS: mm		APPLICATION SPEC 114-137015	SIZE A2
TOLERANCES UNLESS OTHERWISE SPECIFIED:		WEIGHT -	CAGE CODE 00779
0 PLC ±		CUSTOMER DRAWING	DRAWING NO C-T1690160000000
1 PLC ±		SCALE 1:1	SHEET 1 OF 1
2 PLC ±			REV A
3 PLC ±			
4 PLC ±			
ANGLES ±			
FINISH -			
MATERIAL -			